

600S/660SJ

TELESCOPIC BOOM LIFTS



- Rugged all-terrain telescopic boom lifts
- Powerful 4 wheel drive
- Ultra-tight turning radius
- Fully proportional boom functions
- Simple to operate and easy to maintain

 **snorkel**
www.snorkellifts.com

TELESCOPIC BOOM LIFTS

600S/660SJ

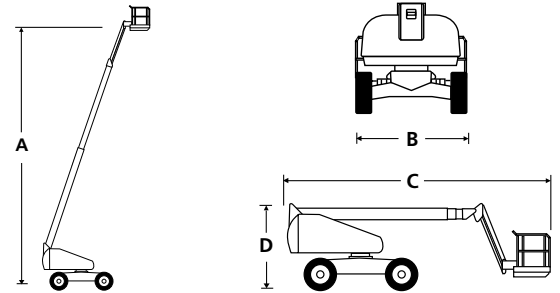
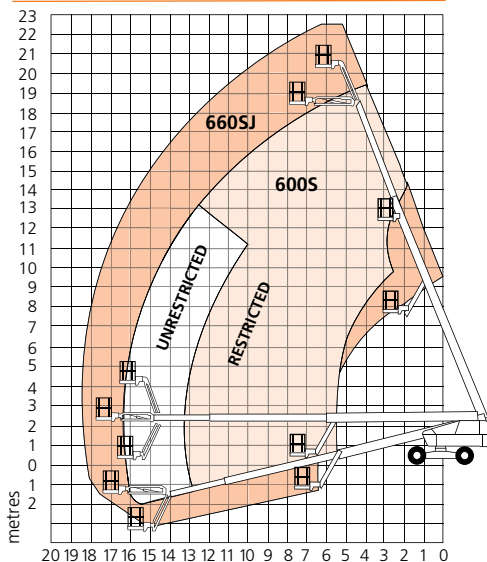
| DIMENSIONS | 600S | 660SJ |
|--------------------------|---------------|---------------|
| Max. working height | 20.3m | 22.1m |
| Max. platform height (A) | 18.3m | 20.1m |
| Max. working outreach | 16.0m | 18.0m |
| Platform size | 2.44m x 0.91m | 2.44m x 0.91m |
| Transport width | 2.24m | 2.24m |
| Overall width (B) | 2.46m | 2.46m |
| Transport length | 9.2m | 8.5m |
| Overall length (C) | 9.2m | 10.5m |
| Transport height | 2.52m | 3.07m |
| Stowed height (D) | 2.52m | 2.52m |
| Ground clearance | 343mm | 343mm |

| PERFORMANCE | | |
|--------------------------------------|--|------------------|
| Platform capacity (SWL) unrestricted | 272kg | 272kg |
| Platform capacity (SWL) restricted | 454kg | n/a |
| Max. drive height | 18.4m | 20.3m |
| Max. wind speed | 12.5m/s | 12.5m/s |
| Max. drive speed (stowed) | 5.6km/h | 5.6km/h |
| Max. drive speed (elevated) | 0.96km/h | 0.96km/h |
| Jib length | n/a | 2.0m |
| Jib arc | n/a | 135° (+70°/-65°) |
| Platform rotation | 150° | 150° |
| Turret rotation (continuous) | 360° | 360° |
| Raise/lower time | 50/50 sec | 50/50 sec |
| Tailswing | 1.2m | 1.2m |
| Gradeability | 45% | 45% |
| Inside turning radius | 3.06m | 3.06m |
| Outside turning radius | 5.21m | 5.21m |
| Tires | 355/55 D625 foam filled lug | |
| Controls | Proportional drive, raise, slew, extend, jib & platform rotate | |
| Drive system | 4 wheel drive | |

| POWER | | |
|----------------------|--------------------------------|--------|
| Power source | Deutz 2.9L 55kW/74hp - Stage V | |
| Auxiliary power unit | 12V DC | 12V DC |

| WEIGHT | | |
|--------|----------|----------|
| Weight | 11,430kg | 12,303kg |

WORKING ENVELOPE



STANDARD FEATURES

- Snorkel Guard™ secondary guarding system
- 2.0m 135° jib (660SJ)
- Oscillating axle
- Hydraulic platform rotation
- Four wheel drive
- All proportional controls
- Swing-out engine tray
- Horn
- Motion alarm
- Power line to platform
- Tilt alarm & cut-out
- DC emergency operation
- Hydraulic oil cooler
- Tri-entry platform
- Flashing amber light
- Hour meter & onboard diagnostic display
- 2 year parts & labour, 5 year structural warranty
- CE approved

OPTIONS

- Special paint colours
- Airline to platform
- Non-marking tyres
- Dual fuel
- AC generator 110V/220V 2kW
- Aircraft package
- Deluxe aircraft package
- Cold weather package
- Extreme cold weather package
- Extreme environment package
- Light package
- Tow kit
- Glazier package
- 10kW generator package
- 10kW generator/welder package
- Environmental hydraulic oil

snorkel www.snorkellifts.com

Vigo Centre, Birtley Road,
Washington, Tyne & Wear,
NE38 9DA, U.K.

t: +44 (0) 845 1550 057

e: sales.emea@snorkellifts.com