

# 400S/460SJ

## TELESCOPIC BOOM LIFTS



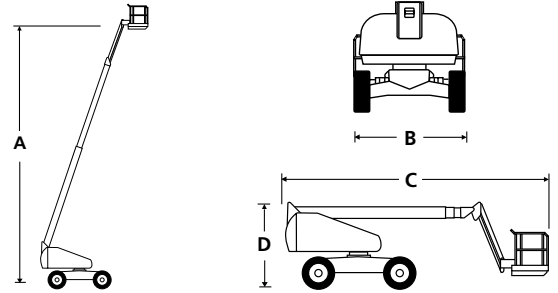
- Rugged all-terrain telescopic boom lifts
- Powerful 4 wheel drive
- Ultra-tight turning radius
- Fully proportional boom functions
- Simple to operate and easy to maintain

 **snorkel**  
[www.snorkellifts.com](http://www.snorkellifts.com)

# TELESCOPIC BOOM LIFTS

# 400S/460SJ

DIMENSIONS	400S**	460SJ**
Max. working height	14.2m	16.0m
Max. platform height (A)	12.2m	14.0m
Max. working outreach	10.1m	12.8m
Platform size	2.44m x 0.91m	2.44m x 0.91m
Overall width (B)	2.31m	2.31m
Transport width	2.08m	2.08m
Overall length (C)	7.57m	8.76m
Stowed height (D)	2.38m	2.38m
Ground clearance	317mm	317mm

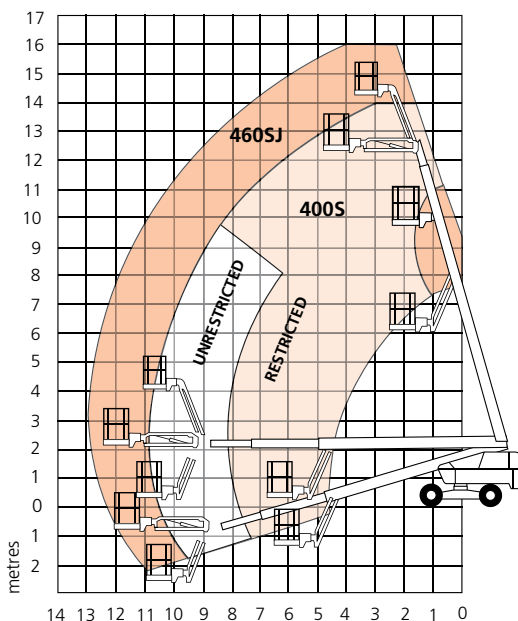


PERFORMANCE		
Platform capacity (SWL) unrestricted	272kg	272kg
Platform capacity (SWL) restricted	454kg	n/a
Max. drive height	12.2m	14.0m
Max. wind speed	12.5m/s	12.5m/s
Max. drive speed (stowed)	6.4km/h	6.4km/h
Max. drive speed (elevated)	1.2km/h	1.2km/h
Jib length	n/a	2.0m
Jib arc	n/a	135° (+70°-65°)
Platform rotation	150°	150°
Turret rotation (continuous)	360°	360°
Tailswing	0.9m	0.9m
Raise/lower time	64/64 sec	64/64 sec
Gradeability	50%	50%
Inside turning radius	3.0m	3.0m
Outside turning radius	5.06m	5.06m
Tyres	355/55 D625 foam filled lug	
Controls	Proportional drive, raise, slew, extend, jib & platform rotate	
Drive system	4 wheel drive	

POWER		
Power source	Deutz 2.9L (36.5kW) diesel 49 hp - Stage VAuxillary power unit	
12V DC	12V DC	

WEIGHT		
Weight	7,135kg	7,829kg

## WORKING ENVELOPE



## STANDARD FEATURES

- Snorkel Guard™ secondary guarding system
- 2.0m 135° jib (460SJ)
- Oscillating axle
- Hydraulic platform rotation
- Four wheel drive
- All proportional controls
- Swing-out engine tray
- Motion alarm
- Horn
- Hour meter & on-board diagnostics display
- Power line to platform
- Tilt alarm & cut-out
- DC emergency operation
- Tri-entry platform
- Flashing amber light
- 2 year parts & labour, 5 year structural warranty
- CE approved

## OPTIONS

- Special paint colours
- Airline to platform
- Non-marking tyres
- Dual fuel
- AC generator 110V/240V 2kW
- Aircraft package
- Deluxe aircraft package
- Cold weather package
- Extreme cold weather package
- Extreme environment package
- Light package
- Tow kit
- Glazier package
- 10kW generator package
- 10kW generator/welder package
- Environmental hydraulic oil

**snorkel** [www.snorkellifts.com](http://www.snorkellifts.com)

Vigo Centre, Birtley Road,  
Washington, Tyne & Wear,  
NE38 9DA, U.K.

t: +44 (0) 845 1550 057  
e: sales.emea@snorkellifts.com